

Anex 01 GR45A-19-29, *Didymograptus bifidus* HALL “ , UTM (E458101 ,N8425228)



Anex 02 GR45A-19-28, A: *Glossograptus fimbriatus* (HOPKINSON)“ B: *Paraglossograptus regularis* Mu, Ge & J.X. ,UTM (N8424250 ,E459671)



Anex 03 GR45A-19-29 A: *Didymograptus bifidus* HALL “ B: *Didymograptus murchisoni* BECK ,UTM (N8425228, E458101)



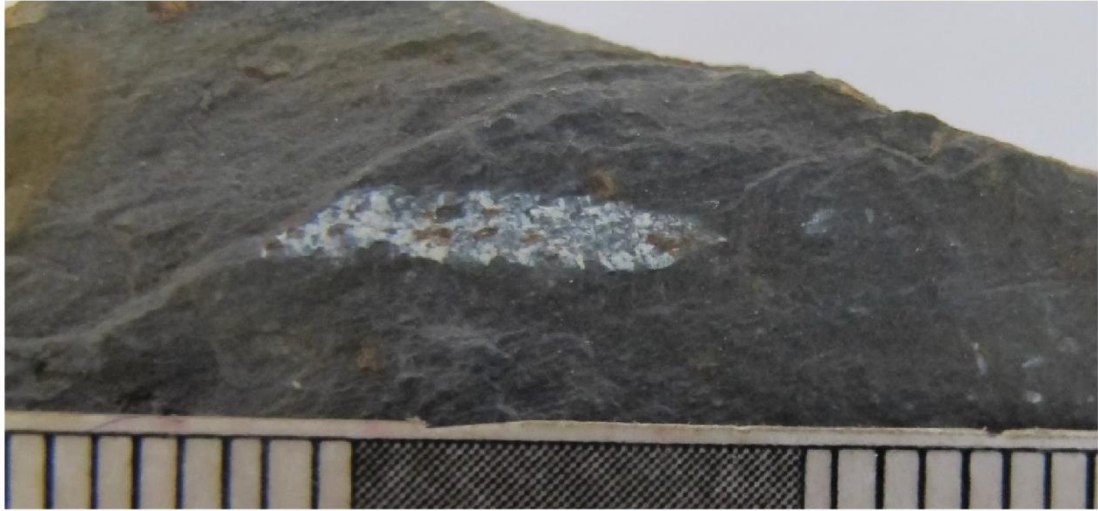
Anex 04 GR45A-19-17, Impresión de corteza de tallo", UTM (N8422843 ,E455174)



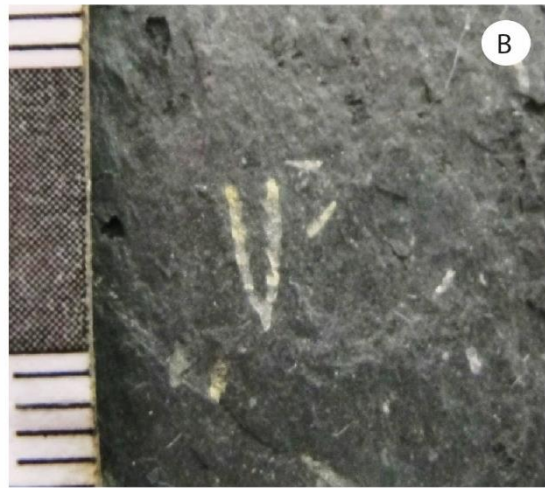
Anex 05 GR45A-19-39, A: *Isograptus forcipiformis* (RUEDEMANN)" B: *Climacograptus eximius* RUEDEMANN ,UTM (N8434489 ,E468513)



Anex 06 GR45A-19-40 A: *Isograptus mobergi* MALETZ" B: *Isograptus victoriae* HARRIS, UTM (N8434489, E468513)



Anex 07 GR45A-19-45, *Cryptograptus* sp. , UTM (N8425925 ,E455467)



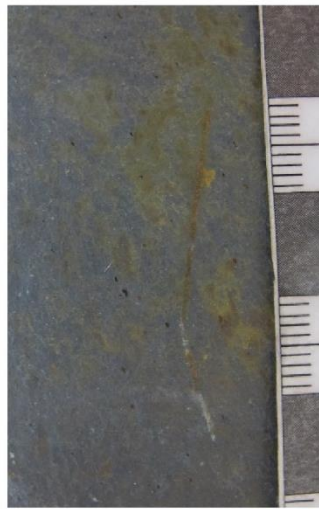
Anex 08 GR45A-19-46, A: *Didymograptus stabilis* ELLES & WOOD B: *Didymograptus bifidus* HALL ,UTM (N8434489 ,E468513)



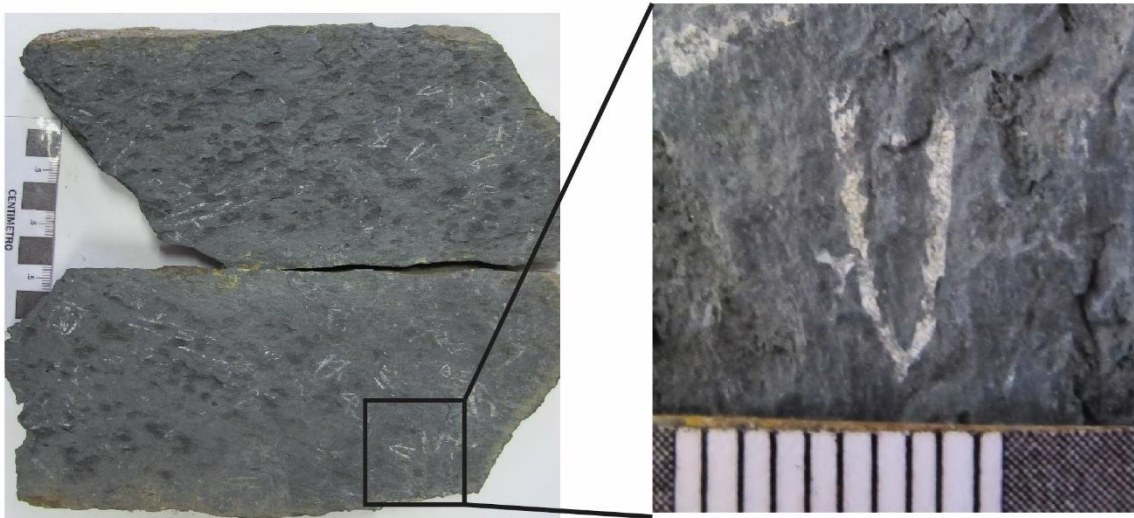
Anex 08 GR45A-19-46, C: *Cryptograptus schaeferi* LAPWORTH,UTM (N8434489, E468513)



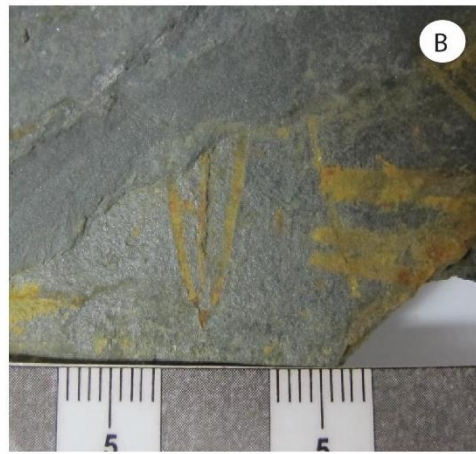
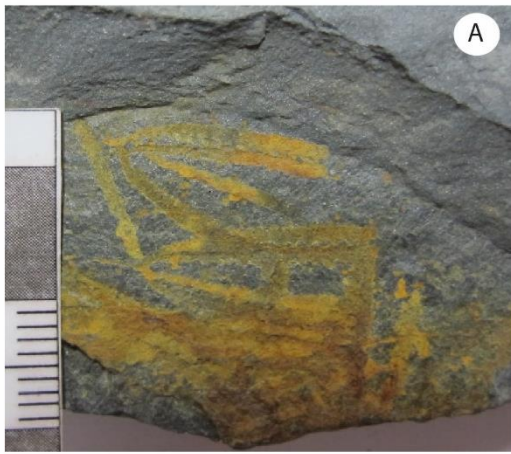
Anex 09 GR45A-19-47, A: *Dicranograptus* sp. B: *Dicellograptus* sp. " , UTM (N8426426 , E455214)



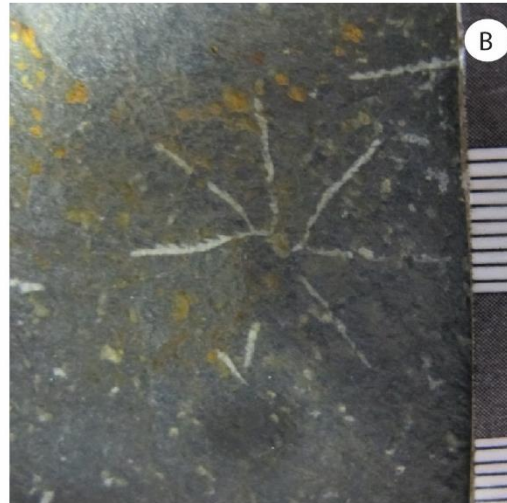
Anex 09 GR45A-19-47, C: *Graptolito* ind. " , UTM (N8426426 , E455214)



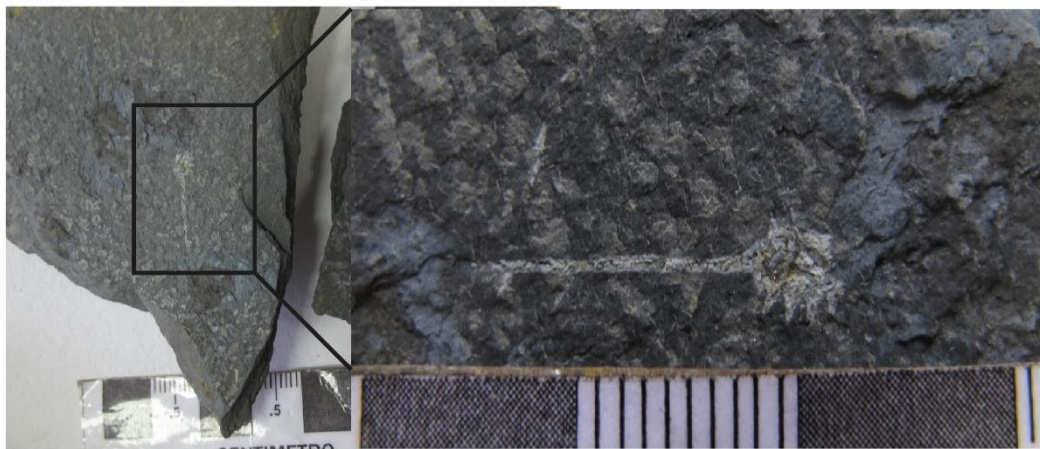
Anex 10 GR45A-19-48 *Didymograptus bifidus* HALL " , UTM (N8426598 , E455415)



Anex 11 GR45A-19-49, A: *Pendeograptus fruticosus* HALL“ B: *Tetragraptus fruticosus* HALL
 ,UTM (N842720 ,E456129)



Anex 12 GR45A-19-53, A: *Glossograptus hinckisii* HOPKINSON“ B: *Anisograptus matanensis* BULMAN.
 ,UTM (N84300381 ,E455999)



Anex 13 GR45A-19-54 A: *Glossograptus* sp.,UTM (N8460612, E456207)



Anex 14 GR45A-19-56, A: *Didymograptus bifidus* HALL B: *Didymograptus muchisoni* BECK
, UTM (N8432506 , E457230)



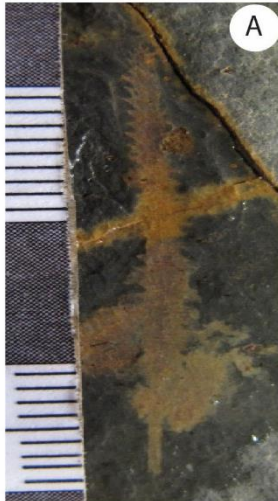
Anex 15 GR45A-19-57A, *Didymograptus bifidus* HALL, UTM (N8420786 , E479681)



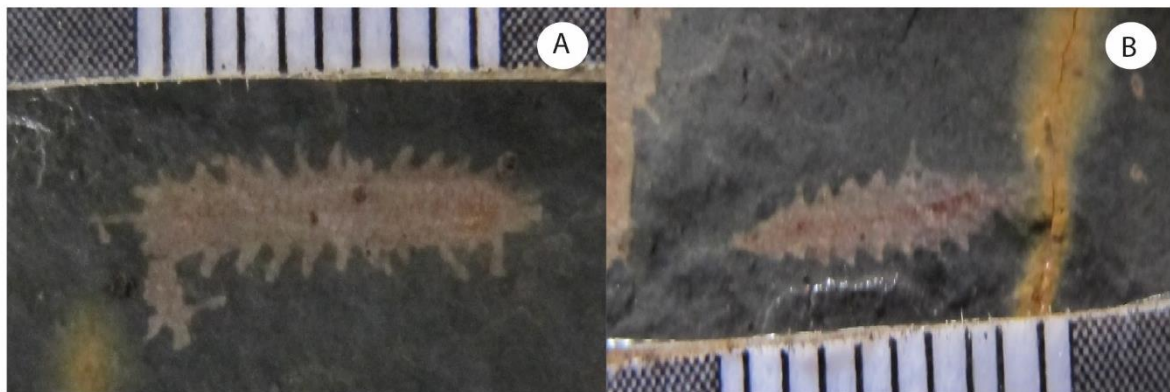
Anex 16 GR45A-19-57B, A: *Glossograptus acanthus* ELLES & WOOD B: *Didymograptus bifidus* HALL
, UTM (N8420786 , E479681).



Anex 17 GR45A-19-57C,A:Didymograptus bifidus HALL B:Paraglossograptus regularis Mu, Ge & J.X.,UTM (N8420786 ,E479681).



Anex 18 GR45A-19-57C,A:Paraglossograptus sp. B:Parakidograptus sp.,UTM (N8420786,E479681).



Anex 19 GR45A-19-57D,A:Glossograptus acanthus ELLES & WOOD B:Didymograptus bifidus HALL ,UTM (N8420786,E479681).



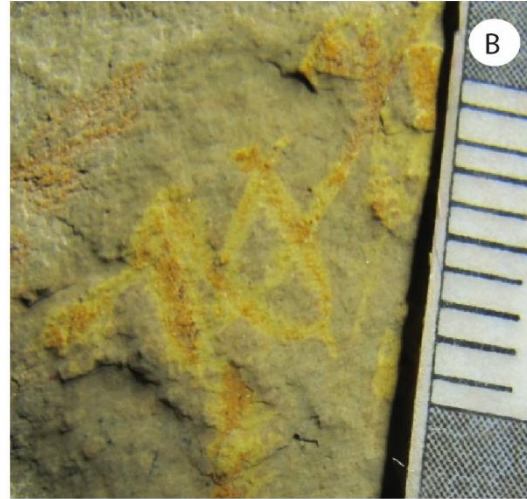
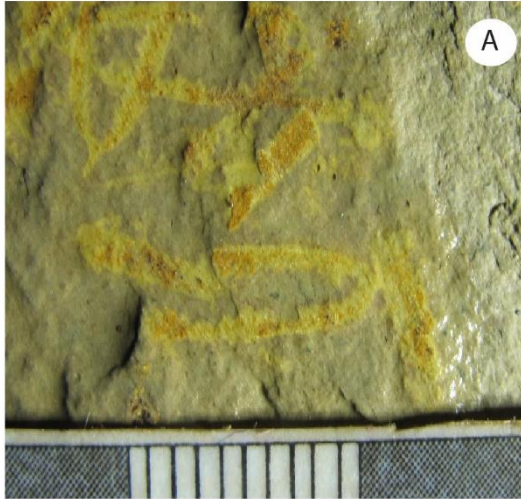
Anex 20 GR45A-19-57E, A: *Didymograptus bifidus* HALL B: *Paraglossograptus regularis* Mu, Ge & J.X., UTM (N8420786 ,E479681).



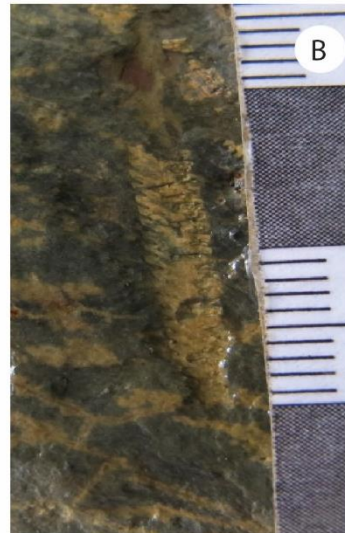
Anex 21 GR45A-19-57E, A: *Amplexograptus compactus* ELLES & WOOD. B: *Didymograptus* sp., UTM (N8420786,E479681).



Anex 22 GR45A-19-57F, A: *Didymograptus bifidus* HALL, B: *Glossograptus fimbriatus* (HOPKINSON), UTM (N8420786,E479681).



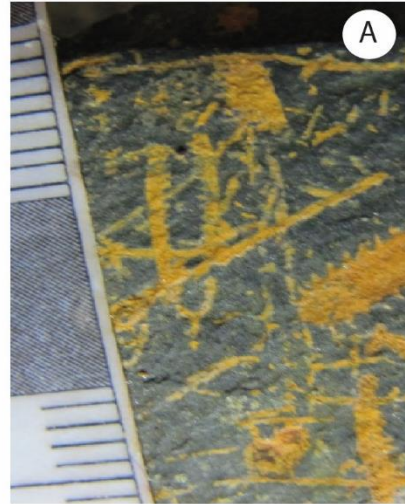
Anex 23 GR45A-19-57G, A: *Didymograptus bifidus* HALL B: *Didymograptus muchisoni* BECK., UTM (N8420786 ,E479681).



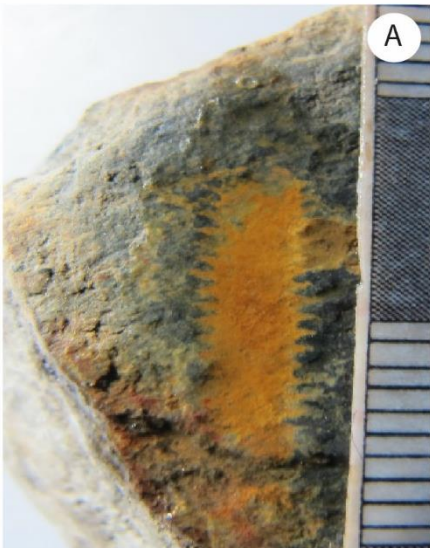
Anex 24 GR45A-19-58, A: *Amplexograptus compactus* ELLES & WOOD. B: *Amplexograptus* sp., UTM (N8421182,E477859).



Anex 25 GR45A-19-61, A: *Didymograptus bifidus* HALL, B: *Amplexograptus confertus* LAPWORTH, UTM (N8421172,E476699).



Anex 26 GR45A-19-66, A: *Didymograptus murchisoni* BECK. B: *Didymograptus bifidus* HALL, UTM (N8429531 ,E449861).



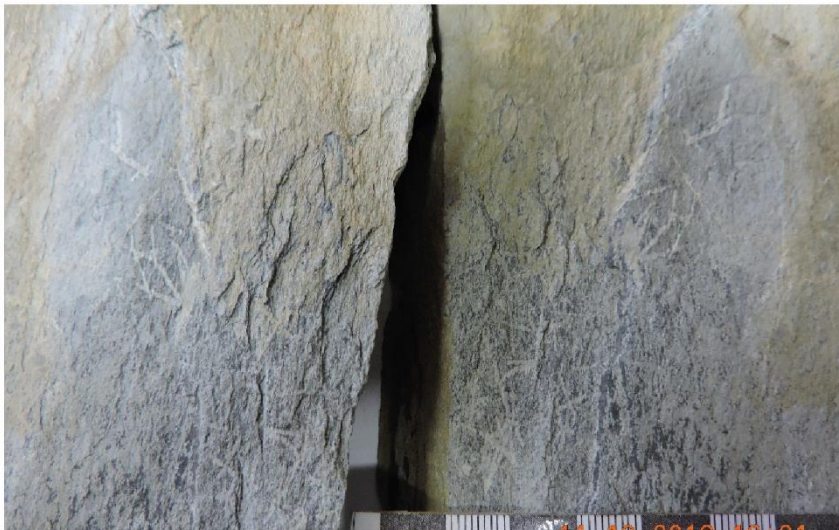
Anex 27 GR45A-19-66, A: *Paraglossograptus* sp. B: *Glossograptus fimbriatus* (HOPKINSON), UTM (N8429531 ,E449861).



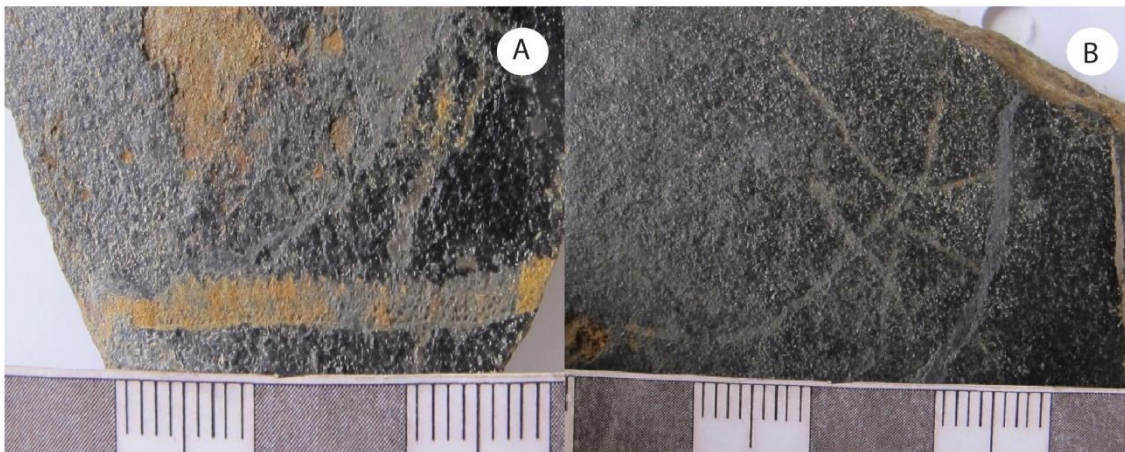
Anex 28 GR45A-19-67A, : *Didymograptus bifidus* HALL, UTM (N8433083, E459501).



Anex 29 GR45A-19-67B, *Didymograptus bifidus* HALL, UTM (N8433083, E459501).



Anex 30 GR45A-19-68, *Tetragraptus* sp. UTM (N8431330 , E464330).



Anex 31 GR45A-19-67A, A.: *Didymograptus sagitticaulis* GURLEY, B: *Clonograptus* sp. , UTM (N8432501, E465307).



Anex 32 GR45A-19-78, *Didymograptus bifidus* HALL, UTM (N8417131, E473805)



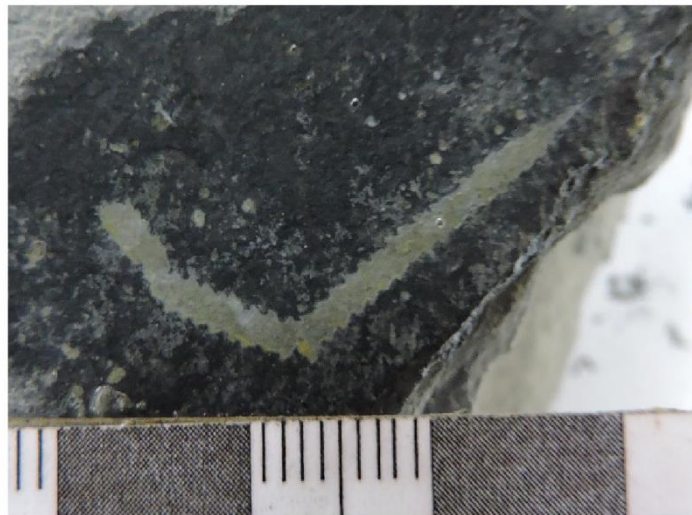
Anex 33 GR45A-19-79, A: *Tetragraptus* cf. *T. pseudobigsbyi* SKEVINGTON B: *Phyllograptus anna* HALL, UTM (N8417349, E473917)



Anex 34 GR45A-19-40 A: *Dicellograptus elegans* (CARRUTHERS), B: *Didymograptus sagitticaulis* GURLEY UTM (N8423503, E478543)



Anex 35 GR45A-19-73, *Multispinula subradiata* (COOPER) ,UTM (N8414617,E473919).



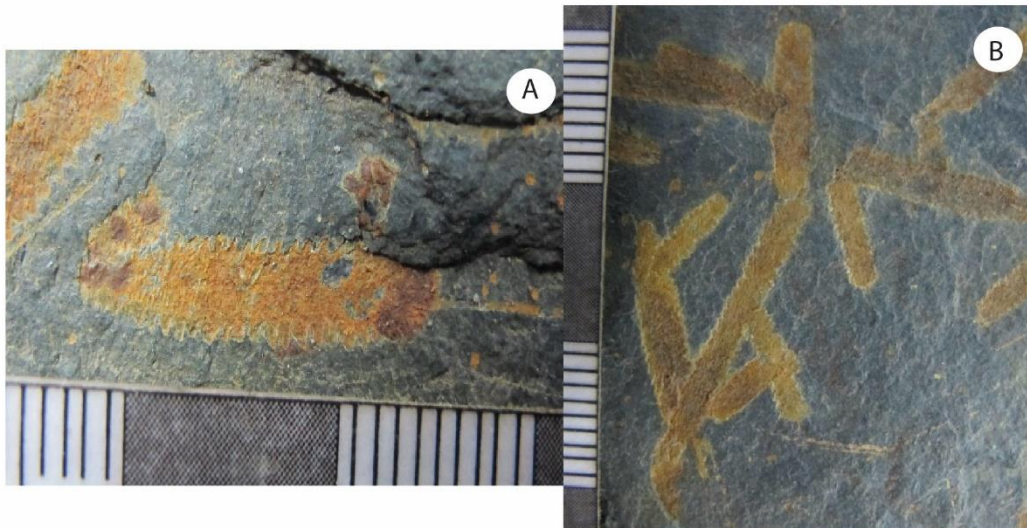
Anex 36 GR45A-19-74A, *Climacograptus brevis* ELLES & WOOD ,UTM (N844716, E474103).



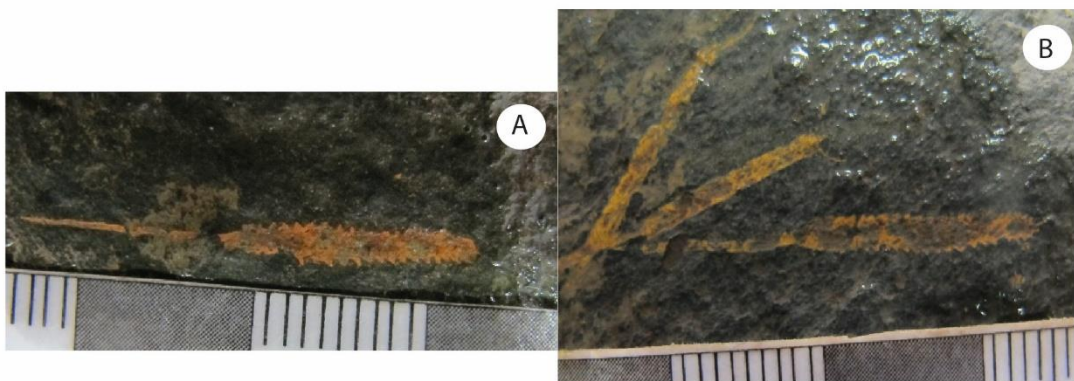
Anex 37 GR45A-19-74A, A:*Amplexograptus* sp.B:*Criptograptus* sp.,UTM (N844716, E474103).



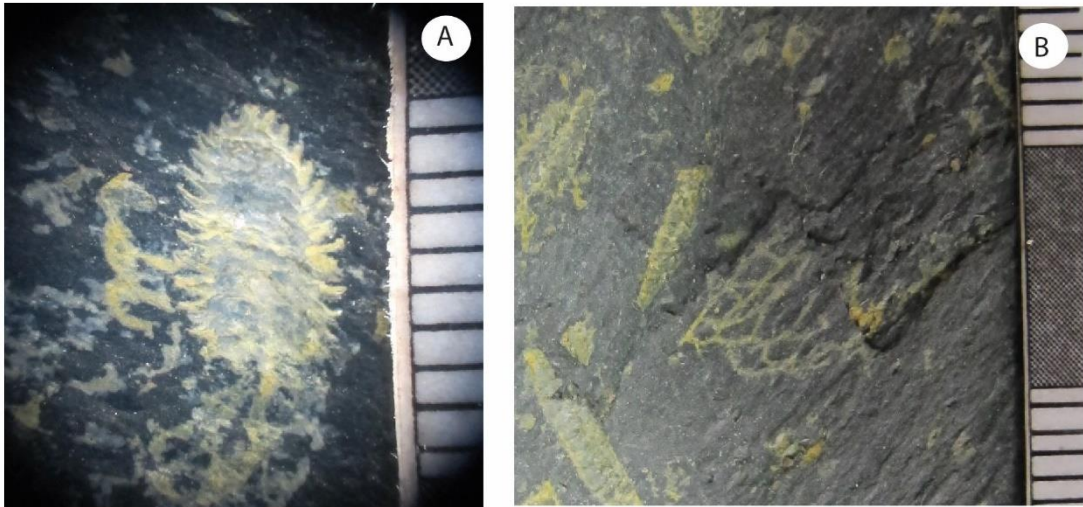
Anex 38 GR45A-19-74B, *Climacograptus tubuliferus* LAPWORTH ,UTM (N844716, E474103)



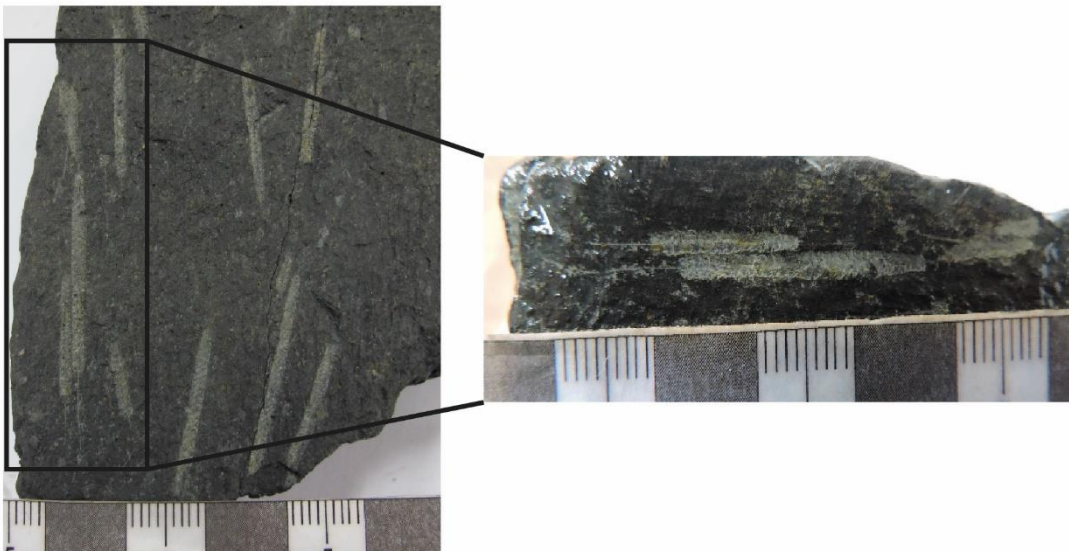
Anex 39 GR45A-19-74C, A:*Phyllograptus anna* HALL B:*Phyllograptus* sp.,UTM (N8452204, E472131).



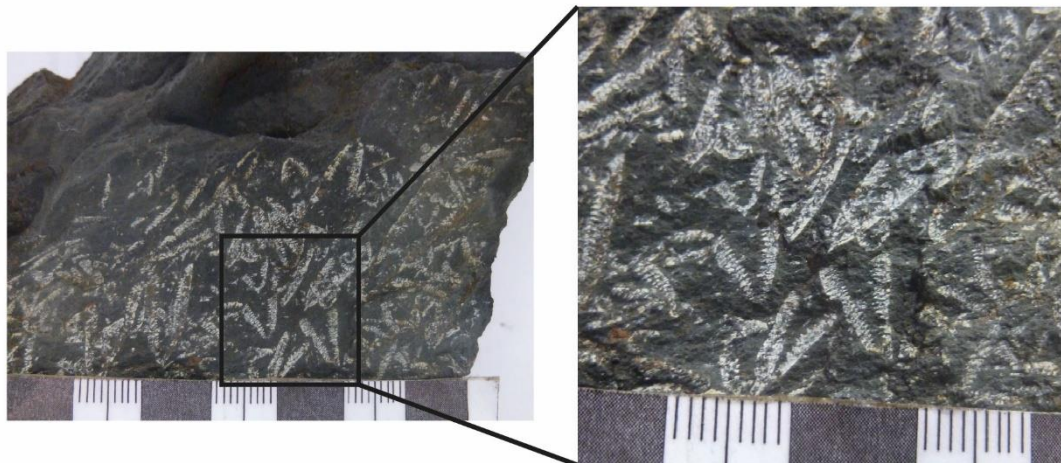
Anex 40 GR45A-19-75, A:*Phyllograptus anna* HALL .B:*Phyllograptus* sp ,UTM (N8414745, E474301).



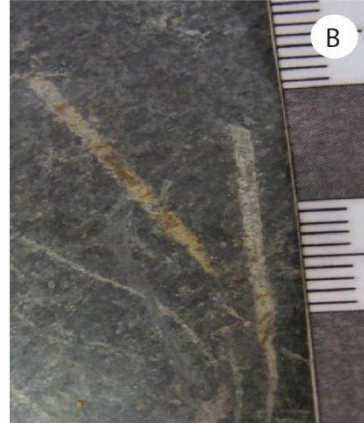
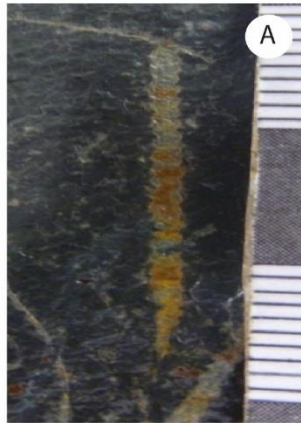
Anex 41 GR45A-19-75A, A: *Phyllograptus angustifolius* HALL. B: *Rhabdinopora* sp. UTM (N8414745, E474301).



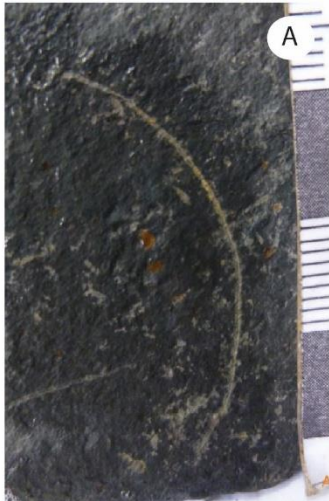
Anex 42 GR45A-19-75B, A: *Climacograptus tubuliferus* LAPWORTH, UTM (N8414745, E474301).



Anex 43 GR45A-19-75C, *Didymograptus muchisoni* BECK, UTM (N8414745, E474301).



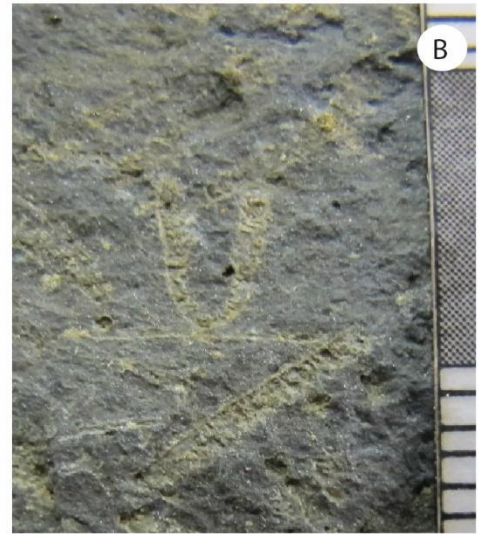
Anex 44 GR45A-19-75D, A:Amplexograptus sp. B:Climacograptus sp.,UTM (N8414745, E474301).



Anex 45 GR45A-19-75D, A:Janograptus sp. B:Phyllograptus sp.,UTM (N8414745, E474301).



Anex 46 GR45A-19-75E , Didymograptus murchisoni BECK ,UTM (N8414745, E474301).



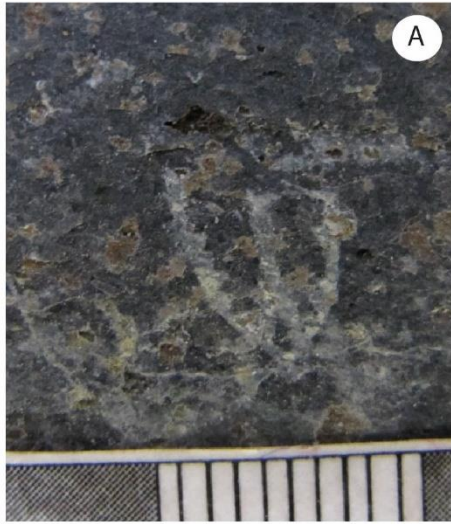
Anex 47 GR45A-19-76A, A: *Didymograptus bifidus* HALL. B: *Didymograptus murchisoni* BECK
.UTM (N8414941, E474599).



Anex 48 GR45A-19-76B, A: *Didymograptus murchisoni* BECK B: *Didymograptus bifidus* HALL
,UTM (N8414941, E474599)



Anex 49 GR45A-19-78 , *Didymograptus bifidus* HALL,UTM (N8417131, E473805).



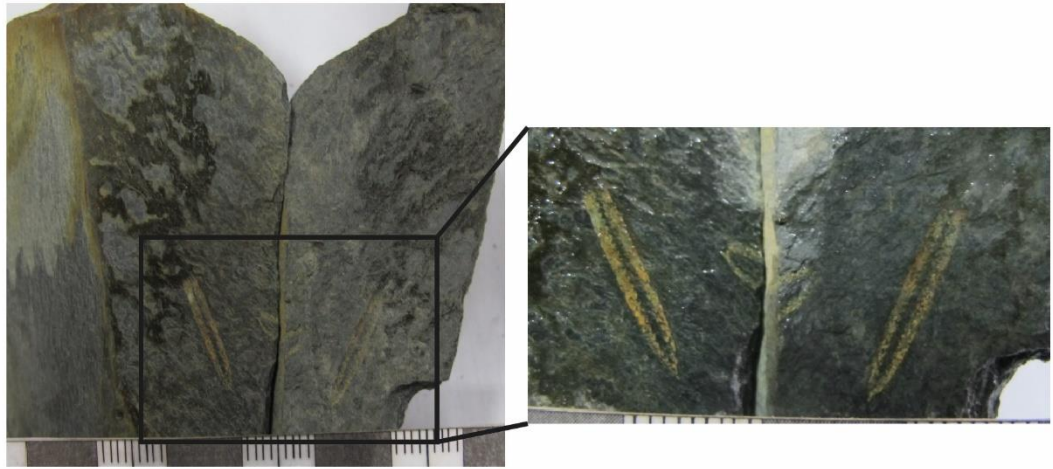
Anex 50 GR45A-19-79, A:*Tetragraptus* cf. *T. pseudobigsbyi* SKEVINGTON B:*Phyllograptus anna* HALL
UTM (N8417349, E473917).



Anex 51 GR45A-19-83, A:*Dicellograptus elegans* (CARRUTHERS) B:*Dicellograptus* sp.
UTM (N8423503 E478543)



Anex 52 GR45A-19-83 , *Didymograptus sagitticaulis* GURLEY, UTM (N8423503 E478543)



Anex 55 GR45A-19-84, *Didymograptus bifidus* HALL.UTM (N8422868, E476981).



Anex 56 GR45A-19-86, A:*Amplexograptus confertus* LAPWORTH B:*Amplexograptus* sp.
,UTM (N8422341 E476889)