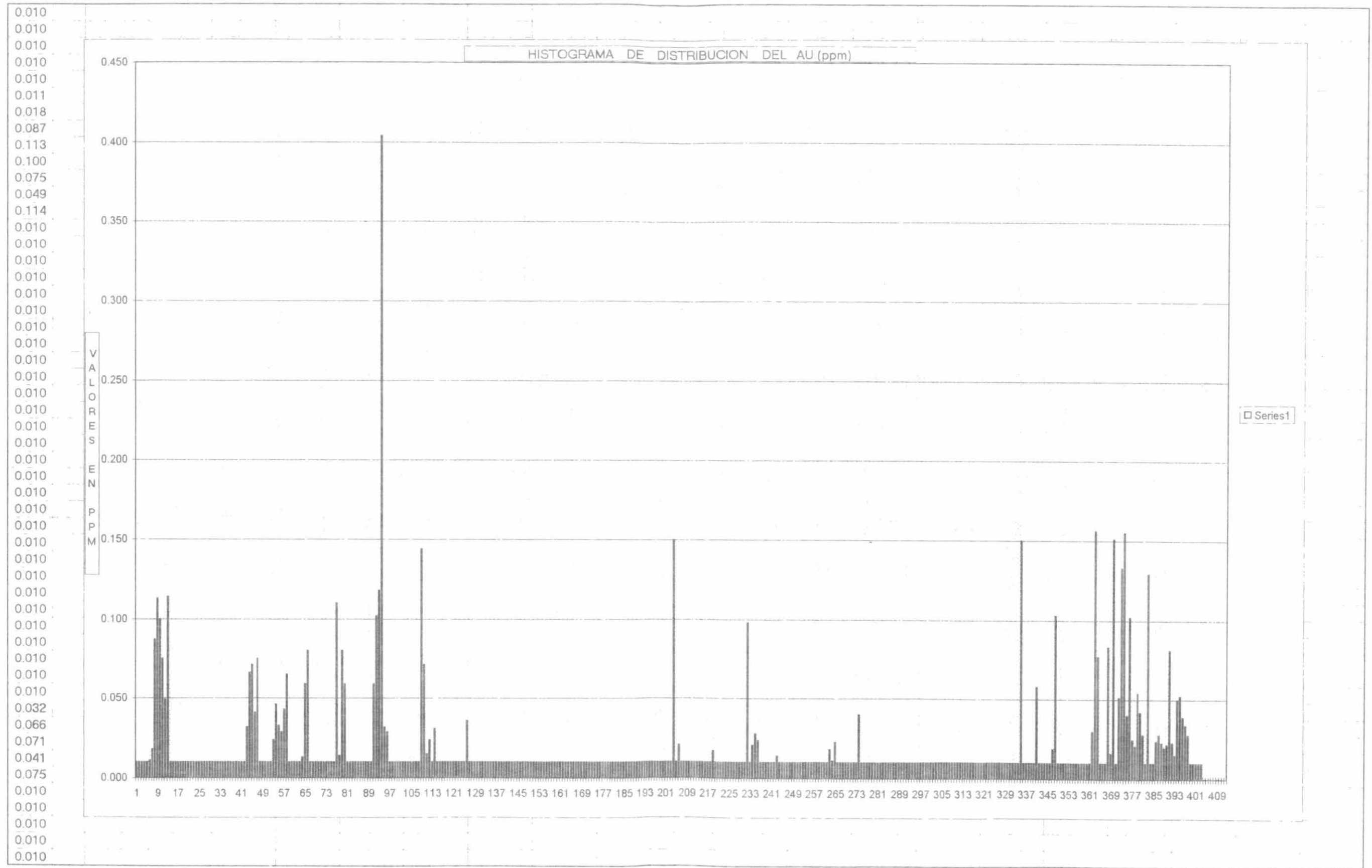
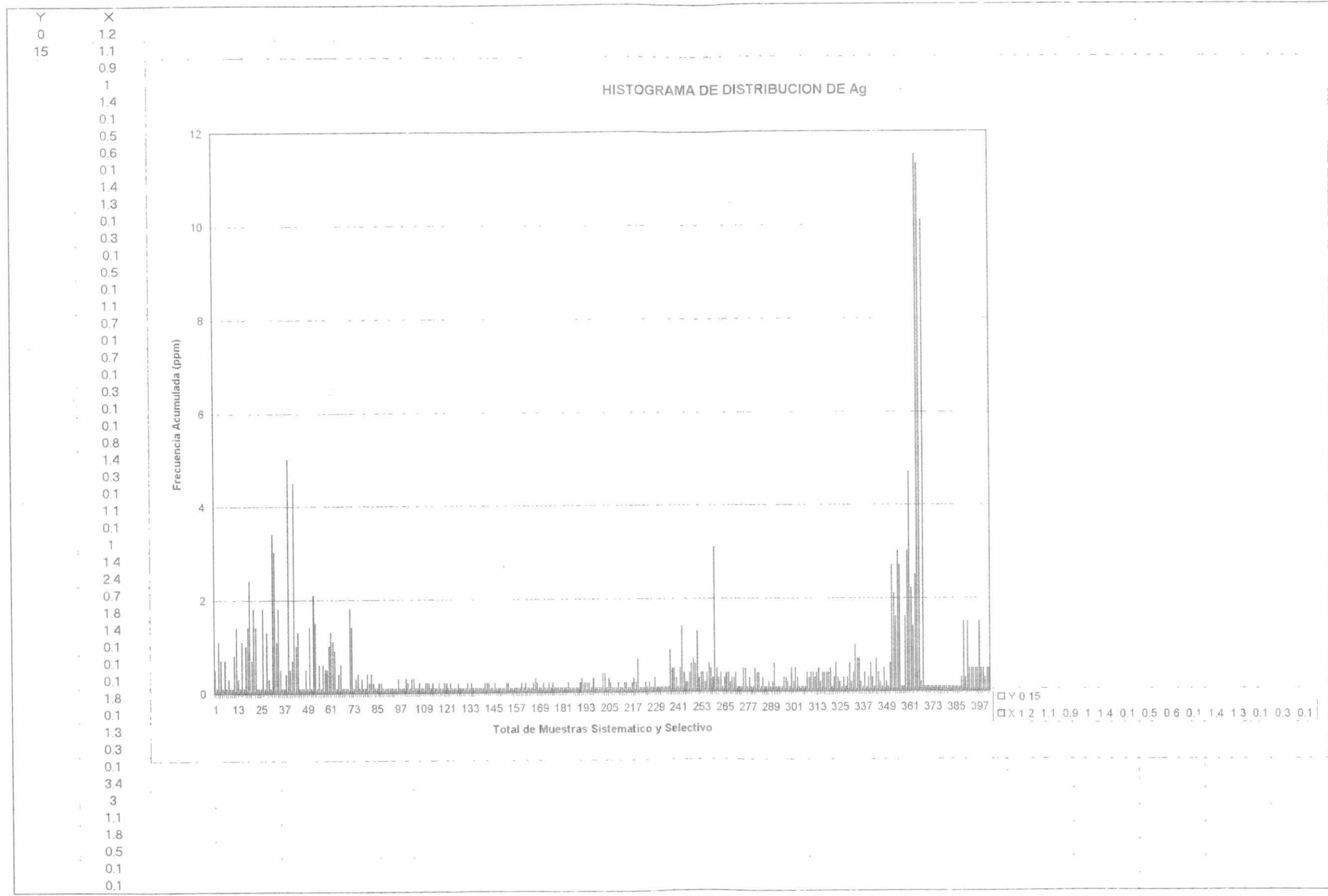


RESULTADOS QUIMICOS DE 32 ELEMENTOS DEL MUESTREO SISTEMATICO SECTOR JAPO

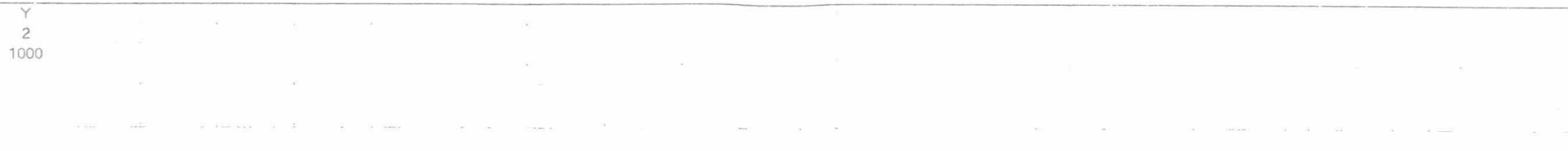
310	8129270	439650	0.010	SE/600 900	0.6	0.02	0.03	0.5	0.05	0.26	0.01	<0.5	<0.01	4	12	10	1.54	<1	<1	2.8	3.6	<3	3.3	2.1	<0.5	<1	<0.1	<1	<10	6	232	29.9	<10	3	6
311	8129770	439650	0.010	SE/100 1000	1.4	0.04	0.57	1.1	0.13	0.24	0.01	1.3	<0.01	26	20	41	3.99	2	<1	13.9	14.9	8	6.2	1.8	1.1	1	0.3	<1	<10	6	194	29	<10	15	5
312	8129670	439650	0.010	SE/200 1000	0.9	0.04	0.54	0.8	0.13	0.1	0.05	1.6	<0.01	46	38	45	3.52	3	3	10.5	9.3	<3	5.1	2.5	0.7	1	0.3	<1	<10	6	47	21.4	<10	8	10
313	8129570	439650	0.010	SE/300 1000	1.1	0.05	1.24	1.9	0.14	0.14	0.33	4.4	0.04	72	49	584	2.83	9	17	9.8	102	<3	32.1	7.2	0.5	<1	0.2	<1	<10	6	124	31.5	<10	<2	4
314	8129470	439650	0.010	SE/400 1000	0.7	0.05	0.43	0.9	0.1	0.12	0.04	2.8	0.01	43	33	68	3.06	1	2	10.9	32.6	<3	30.4	2.7	<0.5	<1	<0.1	<1	<10	6	142	26.1	<10	6	<3
315	8129370	439650	0.010	SE/500 1000	0.8	0.06	0.86	1.2	0.12	0.12	0.1	2.6	0.04	73	59	120	3.08	4	6	11	51.9	<3	35.4	3.1	1	4	0.5	<1	<10	6	123	23.2	<10	14	4
316	8129270	439650	0.010	SE/600 1000 (314)	0.8	0.02	0.05	0.6	0.27	0.18	0.01	0.8	<0.01	35	23	19	3.51	<1	<1	4.6	7.7	56	11.2	1.4	0.6	2	0.1	<1	<10	6	278	15.8	<10	16	<3
317	8129770	440750	0.010	SE/100 1100	0.8	0.04	0.13	0.8	0.08	0.24	0.13	0.7	<0.01	25	16	33	3.21	<1	<1	12	10.5	12	88.9	1.9	3.5	<1	0.5	<1	<10	6	438	6.4	<10	10	10
318	8129670	440750	0.010	SE/200 1100	0.9	0.05	0.28	1.2	0.09	0.14	0.29	3.6	0.05	52	24	101	2.36	4	5	9.9	47.4	<3	76.6	9.7	6.9	<1	0.3	<1	<10	6	159	25.2	<10	5	6
319	8129570	440750	0.010	SE/300 1100	0.9	0.07	0.62	0.7	0.12	0.12	0.51	4	0.06	63	52	276	2.47	10	13	10.9	72.4	<3	28.3	8.5	4.4	<1	0.1	<1	<10	6	115	21.7	<10	5	3
320	8129370	440750	0.010	SE/500 1100	0.7	0.05	0.6	1.2	0.11	0.17	0.05	2.7	0.05	73	43	84	2.99	3	4	10.6	28.2	<3	12.3	3.3	<0.5	2	0.1	<1	<10	6	134	18.4	<10	4	8
321	8129170	440750	0.010	SE/700 1100	1.3	0.04	0.32	0.7	0.08	0.12	0.15	1.1	0.02	29	24	156	3.8	7	5	10.6	66.4	<3	29.2	12.7	0.9	1	<0.1	<1	<10	6	510	37.5	<10	10	5
322	8129770	440850	0.010	SE/100 1200	0.8	0.06	0.25	0.7	0.09	0.14	0.03	0.8	0.03	23	21	46	2.41	2	<1	9.8	14.4	<3	48.5	2.6	1.4	<1	0.1	<1	<10	6	148	18.7	<10	10	4
323	8129670	440850	0.010	SE/200 1200	0.7	0.09	0.89	0.9	0.14	0.09	0.6	2.8	0.08	81	47	185	2.69	11	13	14.5	76.9	13	37.9	6.4	7.1	<1	0.4	<1	<10	6	78	22.3	<10	6	4
324	8129370	440850	0.010	SE/500 1200	1	0.04	0.22	0.8	0.11	0.1	0.2	2	0.03	34	14	74	3.01	3	4	12.7	23.4	<3	65.5	4.9	5.1	<1	0.3	<1	<10	6	430	17.2	<10	5	8
325	8129270	440850	0.010	SE/600 1200	0.9	0.05	0.34	1	0.1	0.18	0.14	1.8	0.03	41	22	68	2.61	3	2	8.1	30.2	<3	44.6	2.3	3.6	2	0.4	<1	<10	6	188	17	<10	4	<3
326			0.010	NE/50 600	<0.5	0.03	<0.01	0.2	<0.01	0.04	0.02	<0.5	<0.01	5	39	9	0.43	<1	2	2.8	2	7	23.9	0.4	1.4	2	0.4	<1	<10	6	19	1.2	<10	2	<3
327			0.010	NE/350 600	0.7	0.02	<0.01	0.2	0.01	0.02	0.01	<0.5	<0.01	8	90	19	4.23	<1	4	10.1	6.2	6	8.2	0.2	3.8	3	0.3	<1	<10	6	60	0.5	<10	2	7
328			0.010	NE/50 600	<0.5	0.03	<0.01	0.2	<0.01	0.04	0.02	<0.5	<0.01	5	39	9	0.43	<1	2	2.8	2	7	23.9	0.4	1.4	2	0.4	<1	<10	6	19	1.2	<10	2	<3
329			0.010	NE/350 600	0.7	0.02	<0.01	0.2	0.01	0.02	0.01	<0.5	<0.01	8	90	19	4.23	<1	4	10.1	6.2	6	8.2	0.2	3.8	3	0.3	<1	<10	6	60	0.5	<10	2	7
330				SW/1300-A 500	0.7	0.06	0.42	0.8	0.05	0.22	0.04	1.6	0.03	34	52	40	2.85	<1	12	6.6	14.4	<3	66.7	3.8	<0.5	2	<0.1	<1	<10	6	214	26.8	<10	27	<3
331				SW/1600 600	0.6	0.04	0.19	0.7	0.02	0.21	0.02	<0.5	0.01	13	88	15	2.28	<1	27	7.5	5	<3	29.2	1.4	0.5	4	<0.1	<1	<10	6	206	33	<10	7	<3
332				SE/900 300 A	0.5	0.07	0.02	0.2	0.06	0.16	0.03	<0.5	0.03	9	31	17	2.79	6	5	5	10.9	8	40.1	1.3	<0.5	5	0.8	<1	<10	6	114	25.4	<10	42	4
333				SE/600 1000 (314)	0.8	0.02	<0.01	0.3	0.1	0.03	<0.01	<0.5	<0.01	21	29	13	3.9	<1	<1	9.2	16.9	<3	22	0.8	<0.5	<1	0.2	<1	<10	6	1020	2.9	<10	4	11

RESULTADOS QUIMICOS DE 32 ELEMENTOS DEL MUESTREO SISTEMATICO SECTOR JAPO

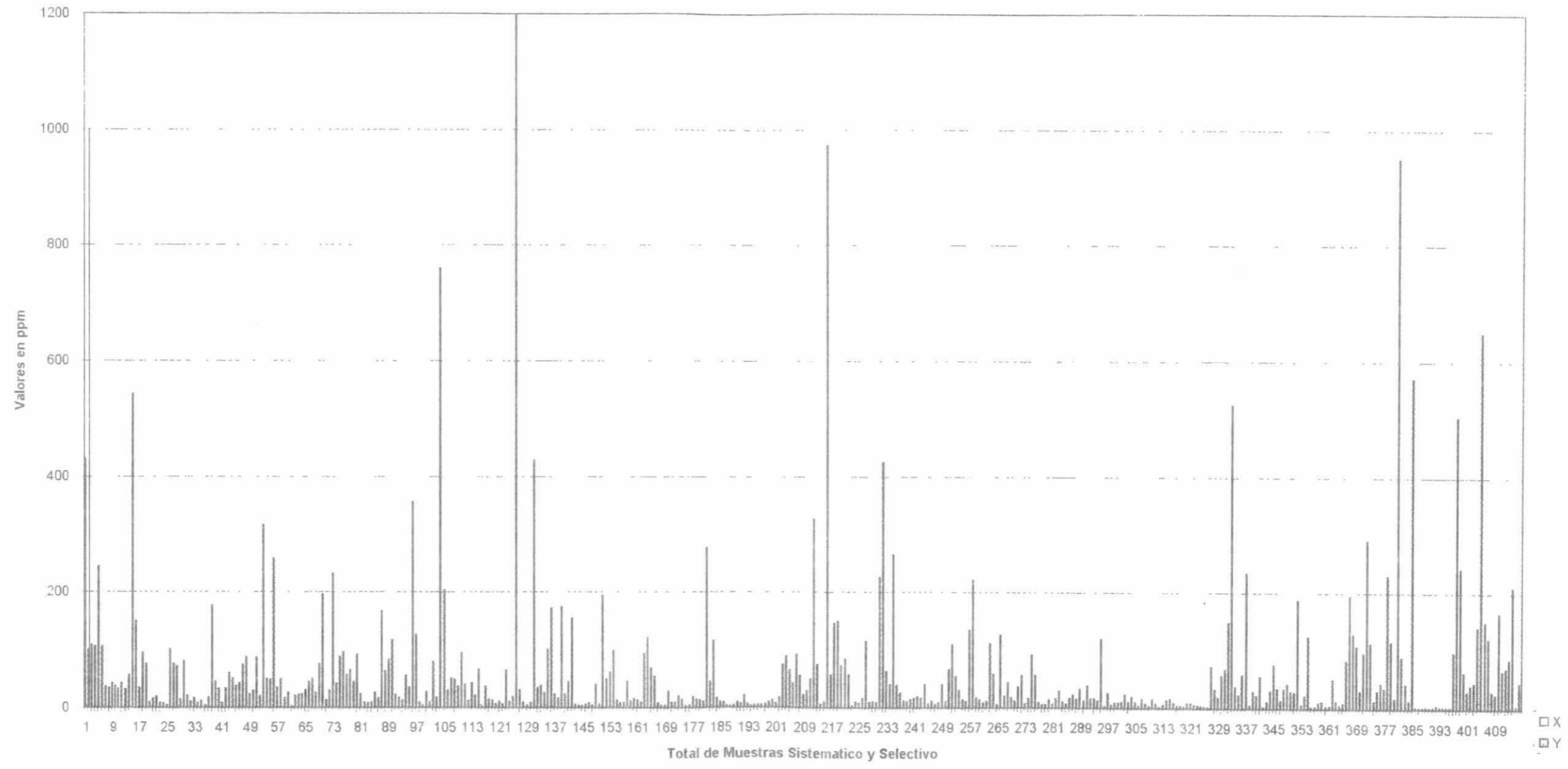


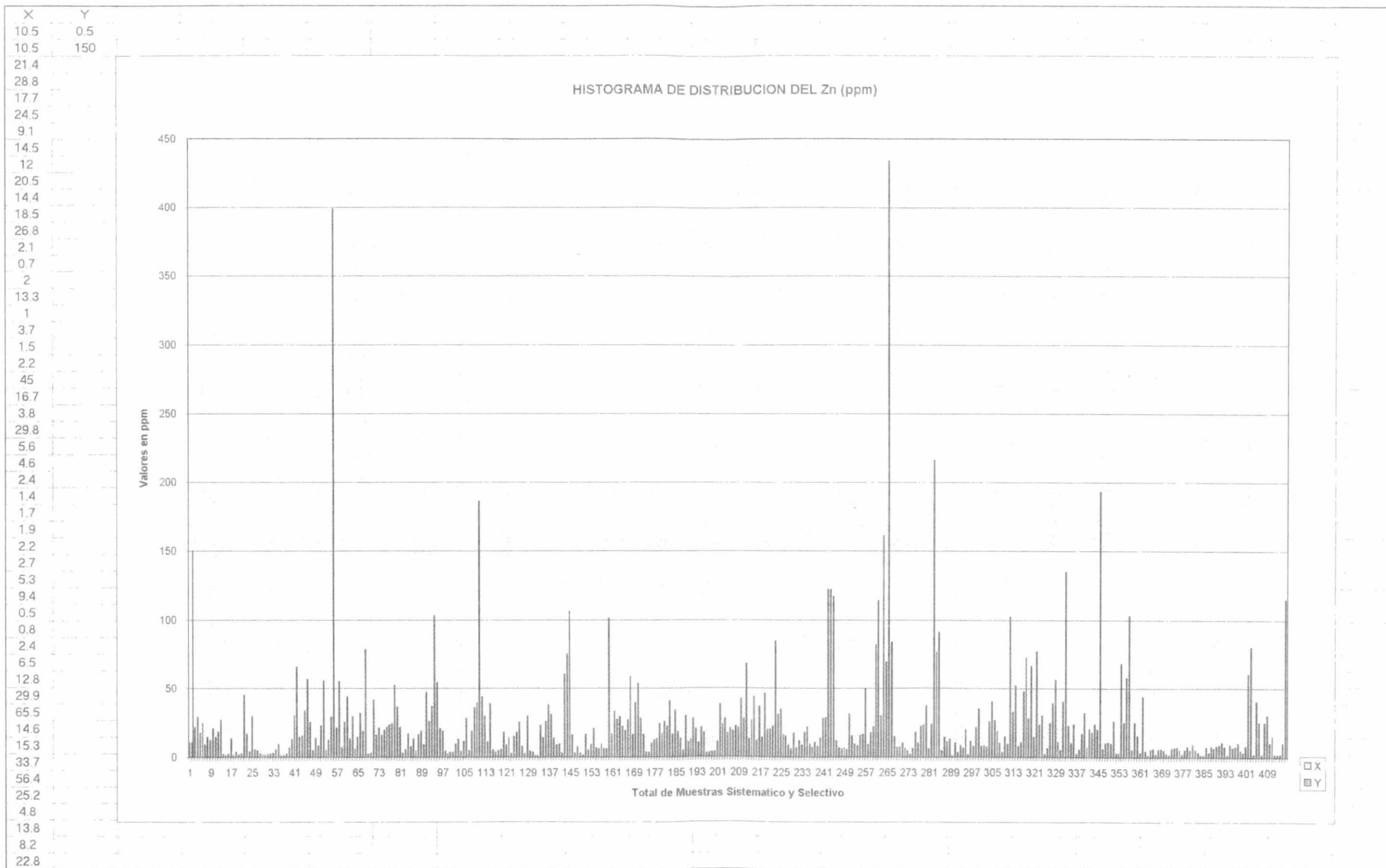


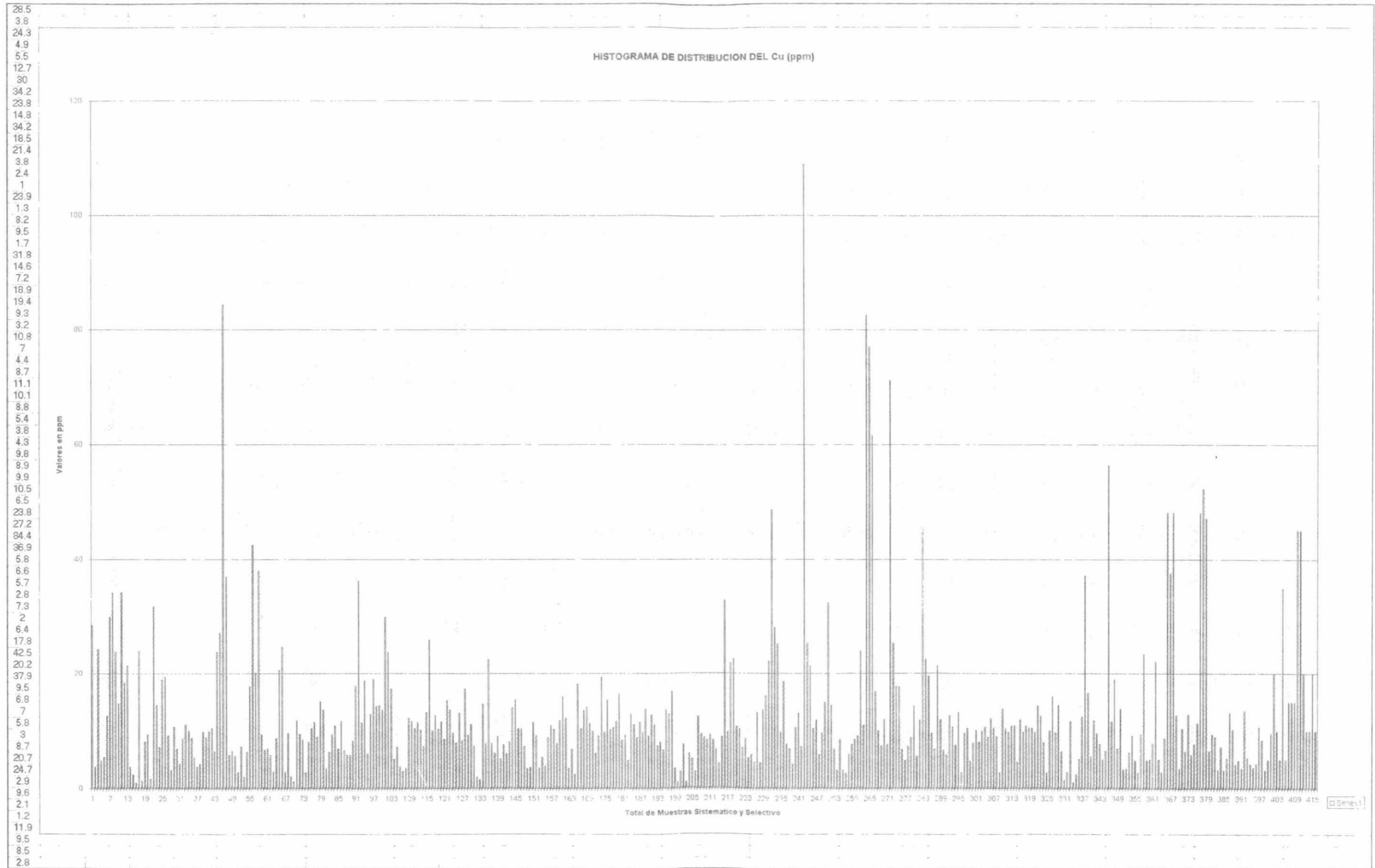
X
430
100
108
106
244
106
37
34
43
38
33
42
32
57
542
150
34
94
76
9
15
19
8
7
5
101
76
71
14
80
21
11
16
8
12
4
18
177
45
33
8
33
60
51
38
43
74
87
24
30
86

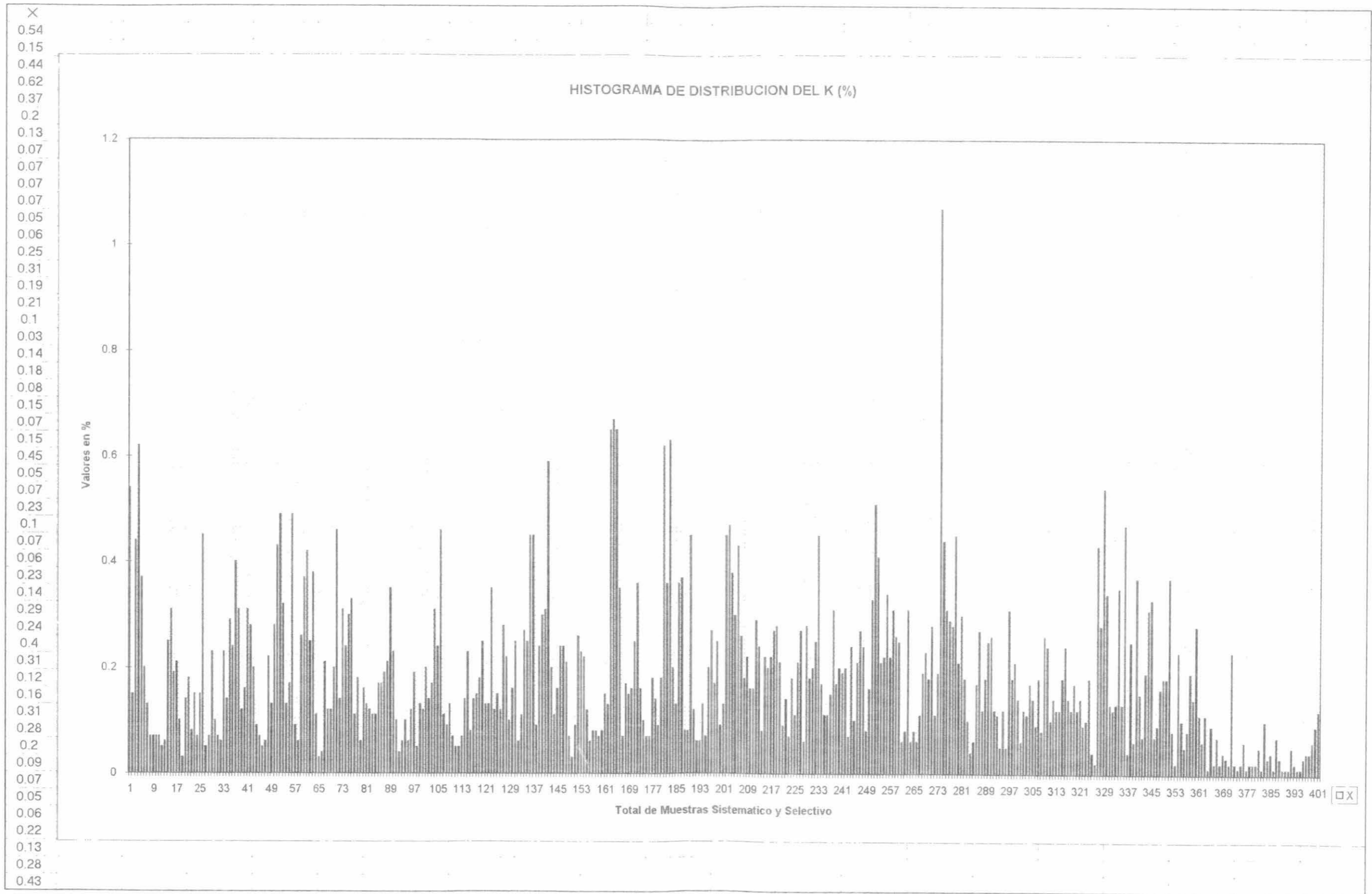


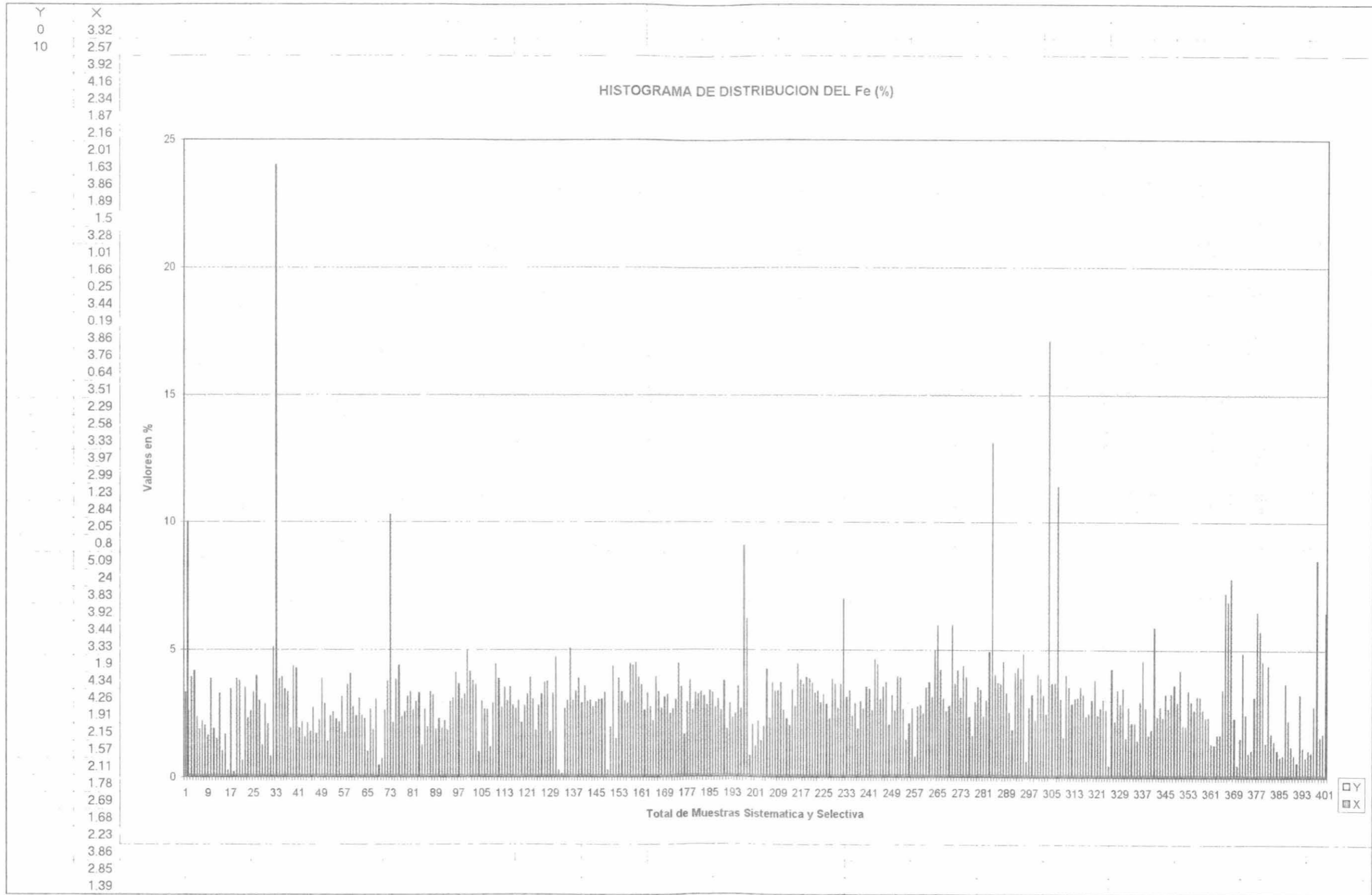
HISTOGRAMA DE DISTRIBUCION DEL Pb (PPM)

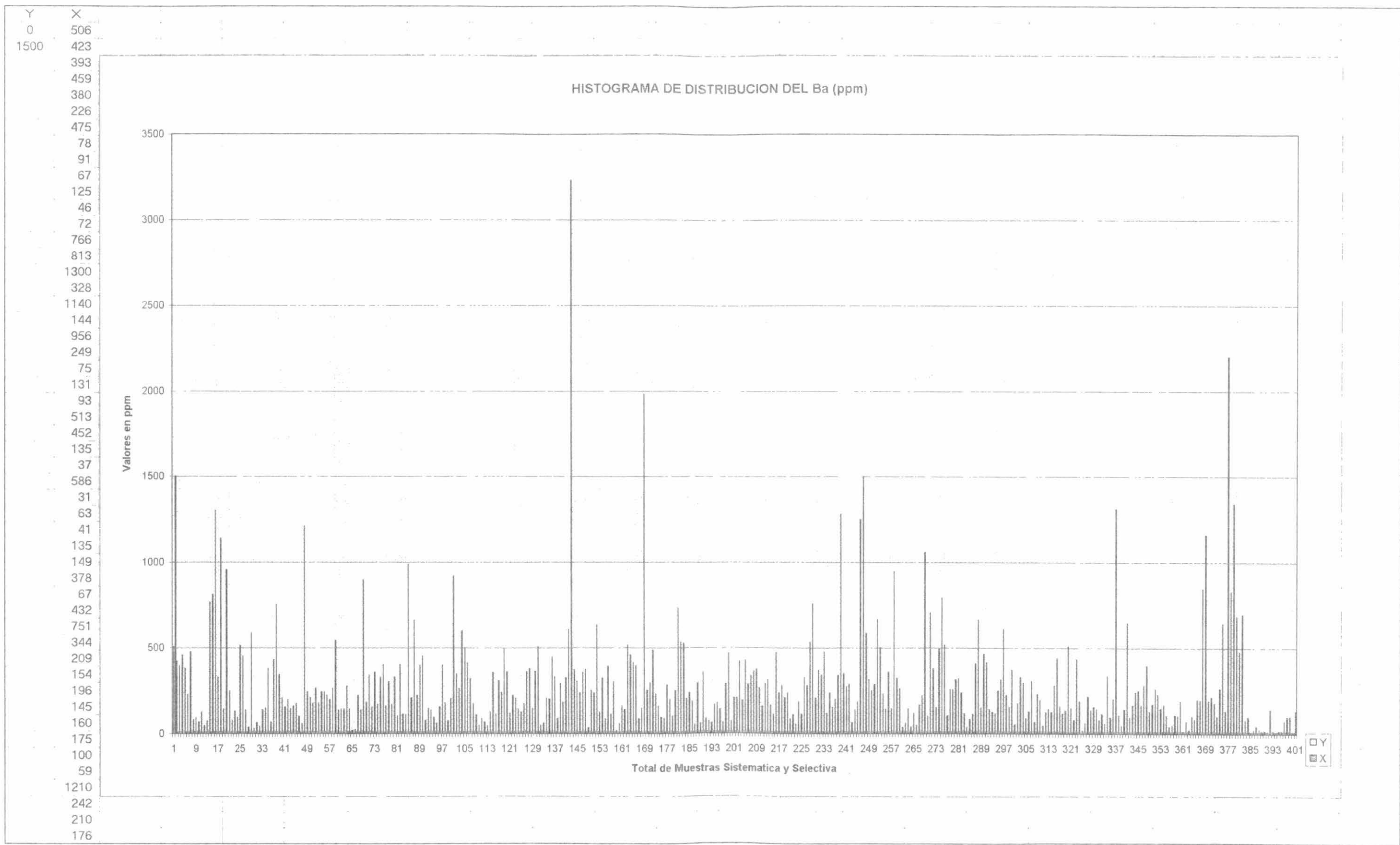






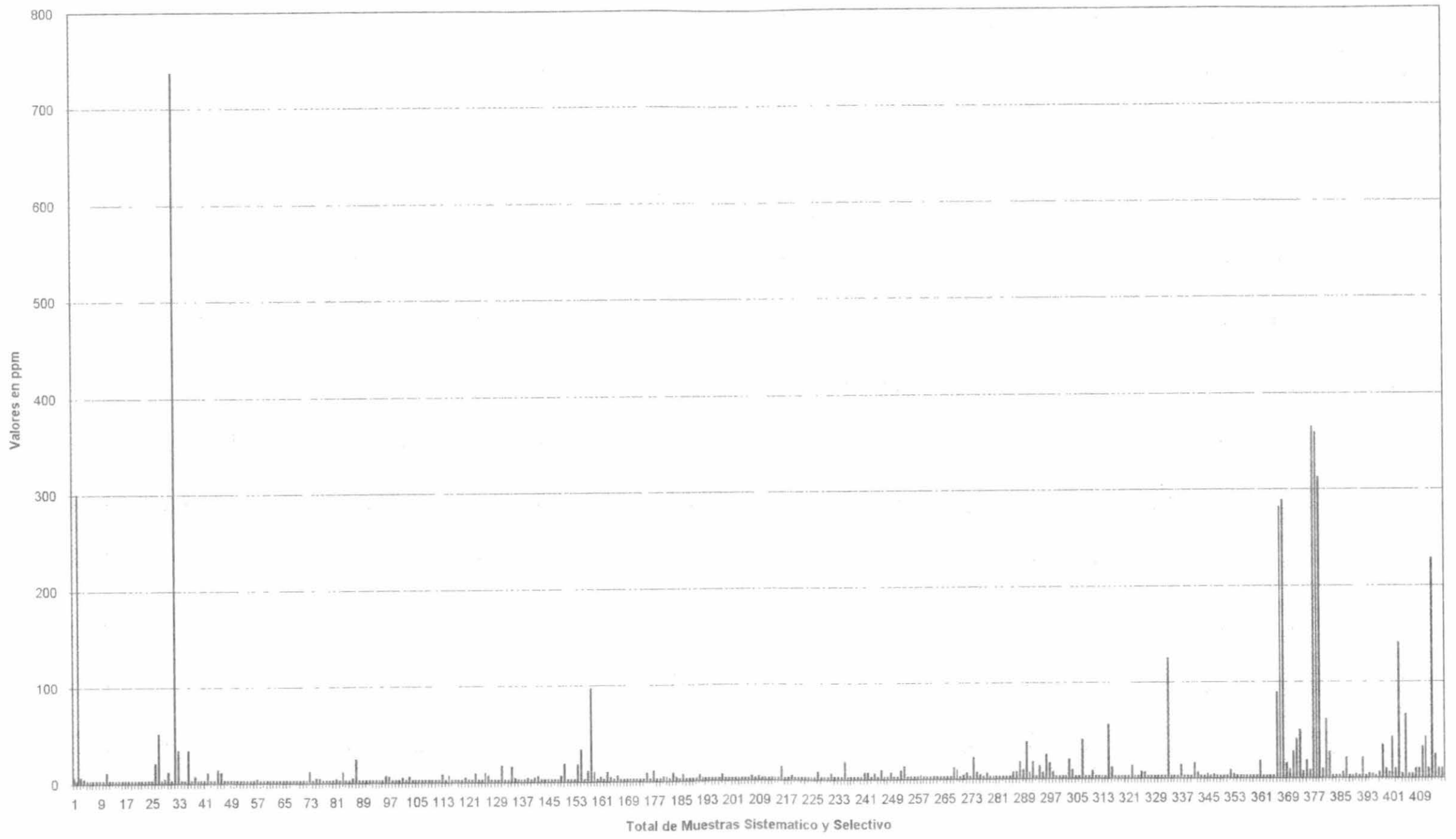


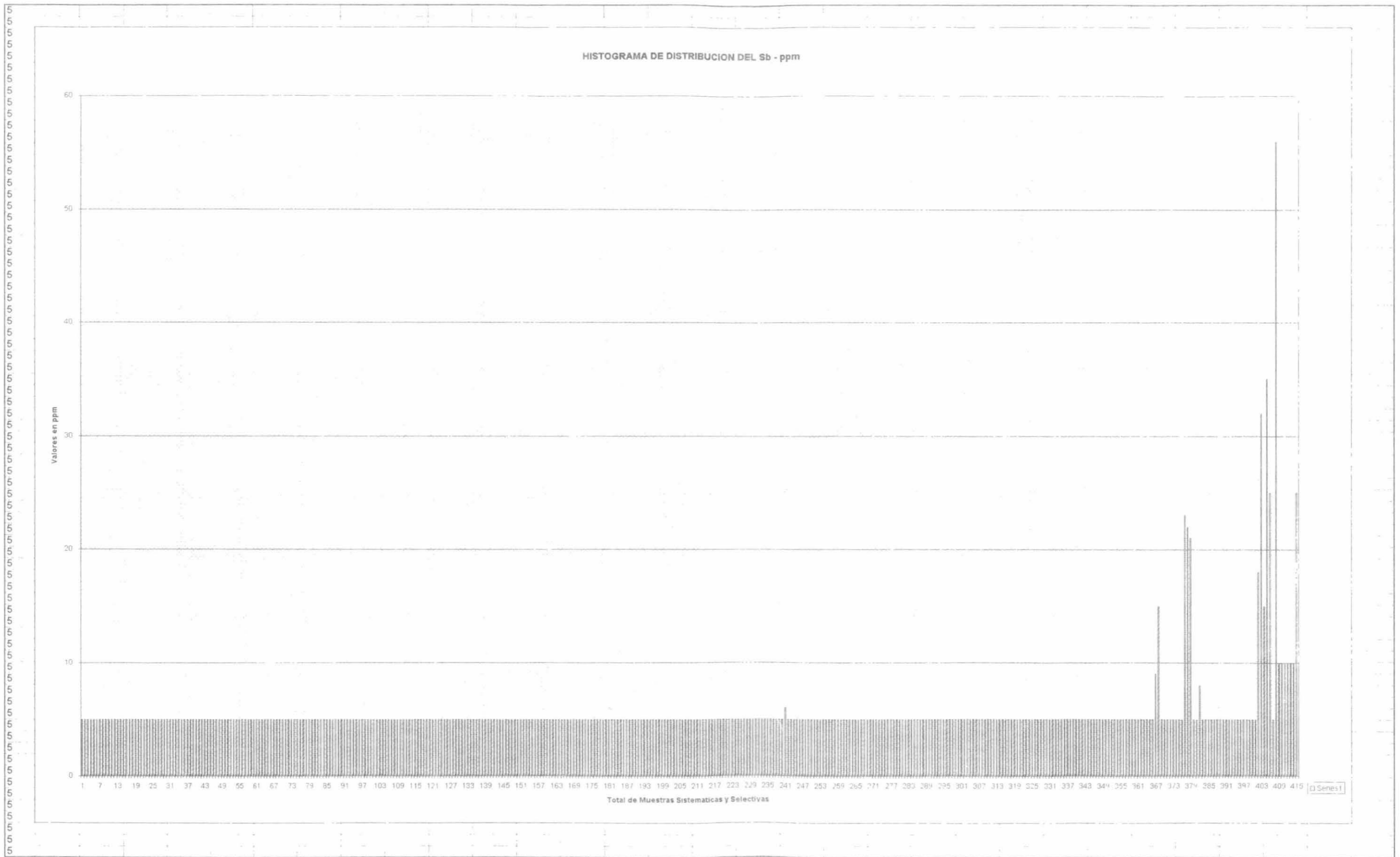


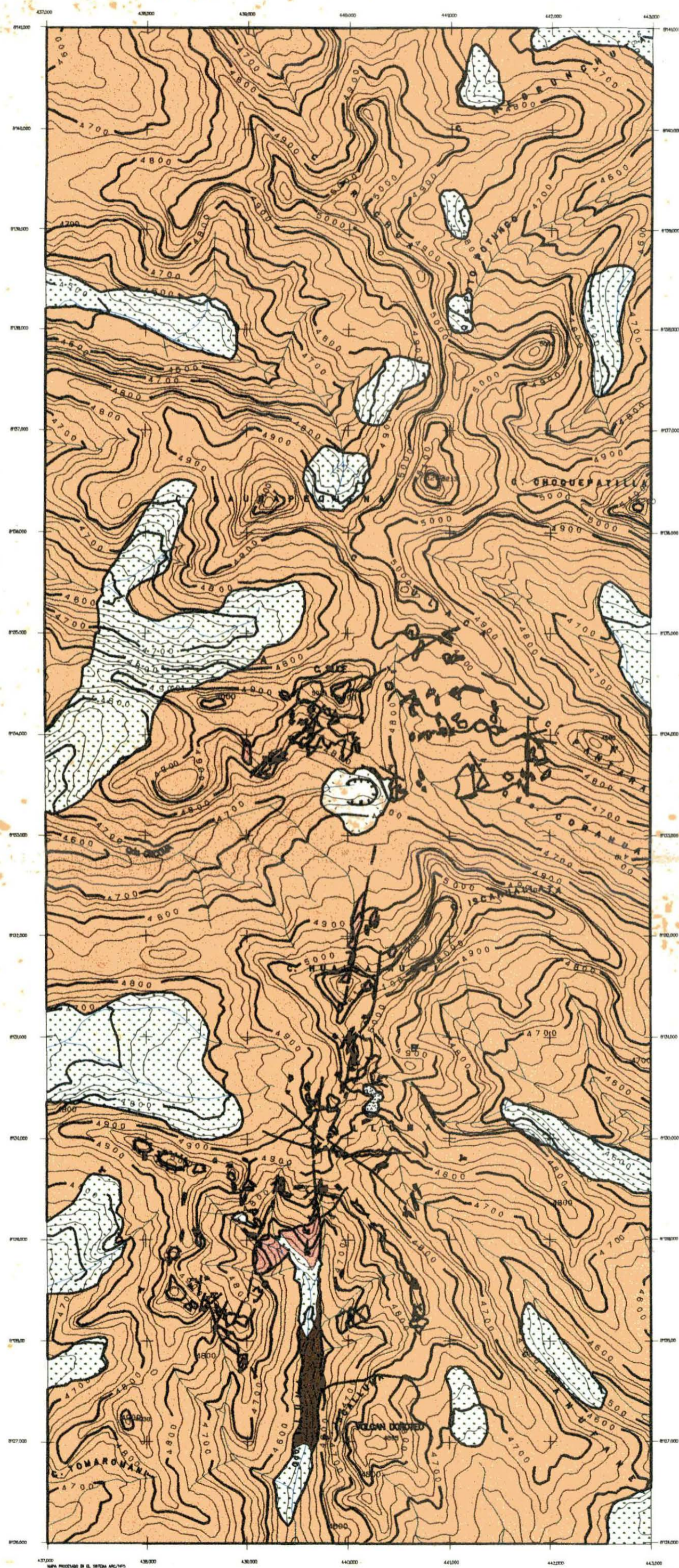


X Y
 6 3
 3 300
 6
 4
 3
 3
 3
 3
 3
 3
 3
 3
 3
 3
 3
 3
 3
 3
 3
 3
 3
 3
 3
 21
 51
 3
 4
 12
 3
 738
 34
 3
 3
 34
 3
 7
 3
 3
 3
 11
 3
 3
 14
 11
 3
 3
 3
 3

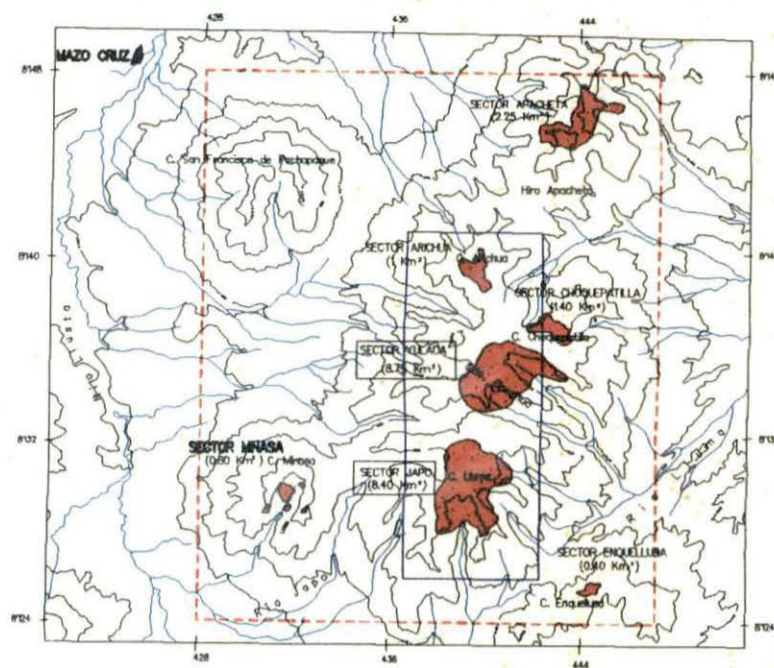
HISTOGRAMA DE DISTRIBUCION DEL As (ppm)



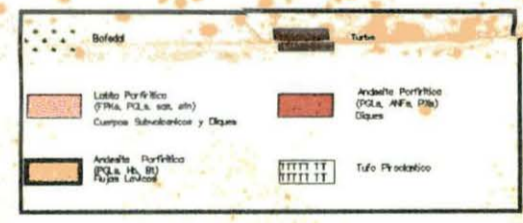




UBICACION DE LOS SECTORES SELECCIONADOS



LEYENDA



SIMBOLOGIA



INSTITUTO GEOLOGICO MINERO Y METALURGICO
 INGEMMET
 DIRECCION DE PROSPECCION MINERA
A.N.A.D. MAZO CRUZ
 MAPA GEOLOGICO Y DE AFLORAMIENTOS
 SECTORES YULACA - JAPO

BASE TOPOGRAFICA : MINISTERIO DE AGRICULTURA	ESCALA: 1 : 50,000	L A M I N A Nº
AUTORES : H. ZARATE, B. MORY, W. LARCO	FECHA : ENERO 95	
APROBADO : M. PAZ	DEJAO : J. URBINA	